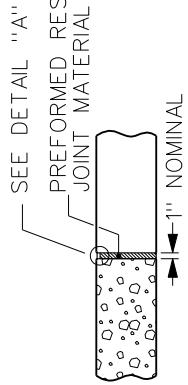
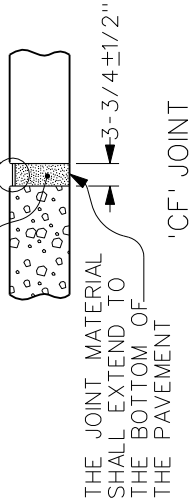


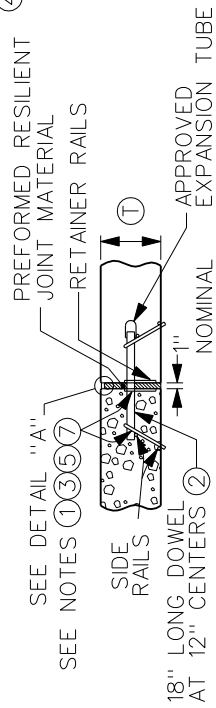
SEE NOTE ⑧
SEE DETAIL "A"



'E' JOINT

1" EXPANSION JOINT

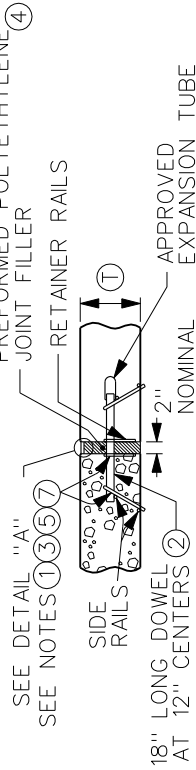
④



'ED' JOINT

1" DOWELED EXPANSION JOINT

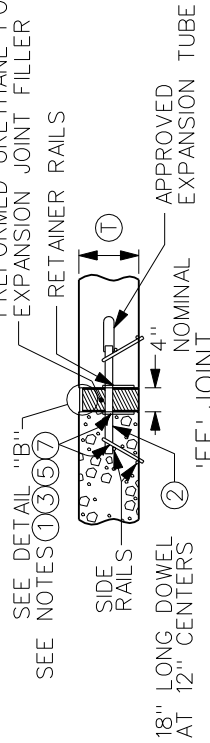
④



'EE' JOINT

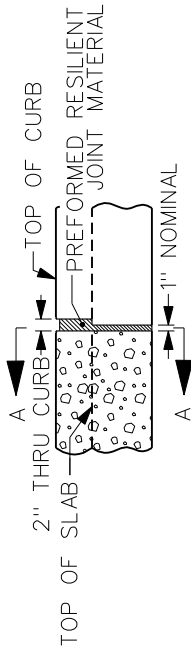
2" DOWELED EXPANSION JOINT

④



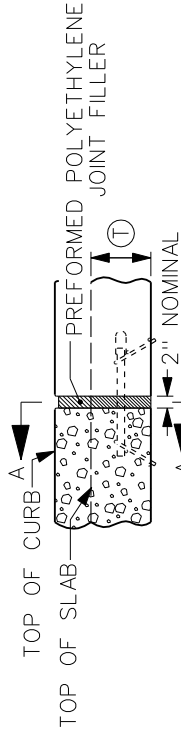
'EF' JOINT

4" DOWELED EXPANSION JOINT



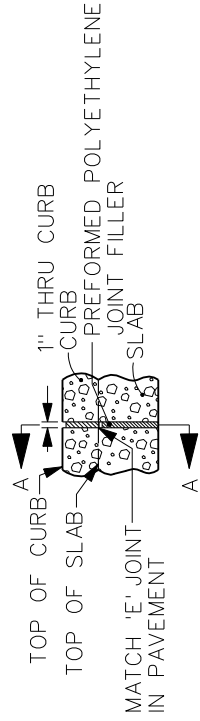
'E' JOINT
JOINT IN CURB

(VIEW AT BACK OF CURB)



'EE' JOINT
JOINT IN CURB

(VIEW AT BACK OF CURB)



MATCH 'E'

'ES' JOINT
JOINT IN CURB

(VIEW AT BACK OF CURB)

| | | |
|----------------|----------|----|
| 1 | 01/25/01 | |
| REV. | DATE | BY |
| DATE: 01-01-98 | | |

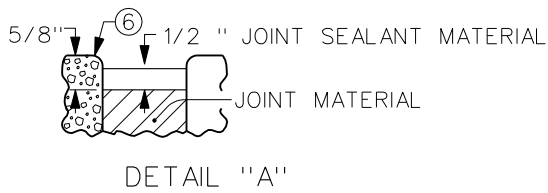
JOINTS (EXPANSION)

FIGURE: 7010.4C

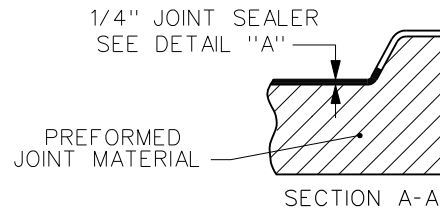
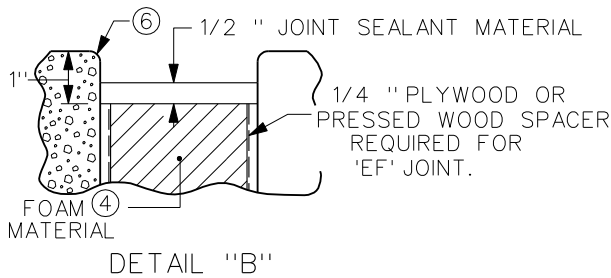
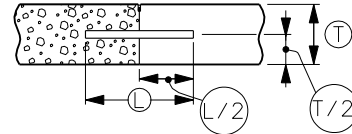
SHEET 1 OF 2

SEE SHEET 2 FOR GENERAL NOTES AND DETAILS.

SUDAS STANDARD SPECIFICATIONS



| BAR SIZE TABLE | | | |
|----------------|------|--------------|---------------|
| (T) | < 8" | 8" AND < 10" | =10" OR > 10" |
| DOWEL SIZE | 3/4" | 1-1/4" | 1-1/2" |



SPECIAL NOTES:

- (1) THE FREE MOVING ENDS OF DOWEL SUPPORT ASSEMBLY SHALL BE PLACED ALTERNATELY ACROSS JOINTS.
- (2) REFER TO BAR SIZE TABLE
- (3) THE FREE END OF DOWEL BAR SHALL BE COATED AS DIRECTED BY THE JURISDICTIONAL ENGINEER PRIOR TO PLACEMENT OF SECOND SLAB TO PREVENT BOND WITH THAT PORTION OF PAVEMENT.
- (4) HOLES FOR JOINT MATERIAL SHALL BE DRILLED OR PREFORMED FOR APPROPRIATE DOWEL SIZE MEETING REQUIREMENTS OF SECTION 7010, 3.04 F.
- (5) BARS IN TRANSVERSE JOINTS SHALL BE PLACED SO THAT NO BAR WILL BE CLOSER THAN 6" TO ANY LONGITUDINAL JOINT (CENTERLINE OR LANELINE). THE DISTANCE TO THE FIRST BAR FROM EDGE OF PAVEMENT WILL VARY FROM 6" TO 12" DEPENDING UPON PAVEMENT WIDTH.
- (6) EDGE WITH 1/4" TOOL FOR LENGTH OF JOINT INDICATED IF FORMED; EDGING NOT REQUIRED WHEN CUT WITH DIAMOND BLADE SAW.
- (7) WELD SIDE OPPOSITE EXPANSION TUBE
- (8) PREFORMED JOINT MATERIAL INSTALLED WITH LUBRICANT ADHESIVE MEETING THE REQUIREMENTS OF SECTION 7010, 2.02 L.

| | | | | |
|----------------|----------|----|--------------------|-----------------|
| 1 | 01/25/01 | | | |
| REV. | DATE | BY | JOINTS (EXPANSION) | FIGURE: 7010.4C |
| DATE: 01-01-98 | | | | SHEET 2 OF 2 |