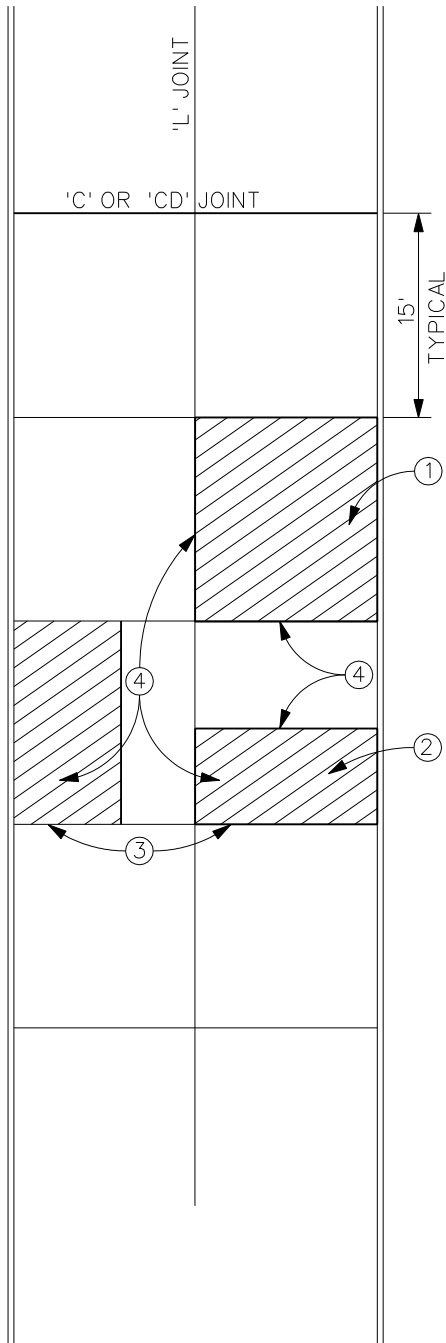


SUDAS STANDARD SPECIFICATIONS



1. FULL PANEL PATCHES SHALL TYPICALLY BE REQUIRED FOR ALL STREET EXCAVATIONS AND UTILITY-CUTS.
2. HALF PANEL PATCHES SHALL BE ALLOWED IF THE PAVEMENT IS MORE THAN 10 YEARS OLD OR PRIOR APPROVAL IS RECEIVED FROM THE JURISDICTIONAL ENGINEER.
3. SMALLER PATCHES MAY BE ALLOWED UPON PRIOR APPROVAL OF THE JURISDICTIONAL ENGINEER. APPROVAL MUST BE OBTAINED FOR EACH INCIDENCE AND EACH STREET SEGMENT IN QUESTION. EXISTANCE OF PRIOR PATCHING OF THIS TYPE SHALL NOT MEAN THAT IT IS ACCEPTABLE OR ALLOWED.
4. REPLACE JOINTS AS SHOWN IN FIGURE 7040.2.
5. JURISDICTION MAY REQUIRE USE OF CONTROLLED LOW STRENGTH MATERIAL (CLSM) TO BE USED FOR TRENCH OR EXCAVATION BACKFILL. SEE SECTION. 3010, 2.11 D.
6. UNDERMINING OF PAVEMENT IS NOT PERMITTED.

MINIMUM PATCH REQUIREMENTS FOR P.C.C. PAVEMENT



1	01/25/01		FULL DEPTH P.C.C. PATCHING	FIGURE: 7040.1
REV.	DATE	BY		SHEET 1 OF 1
DATE: 09-27-00				