



Communicate to Innovate

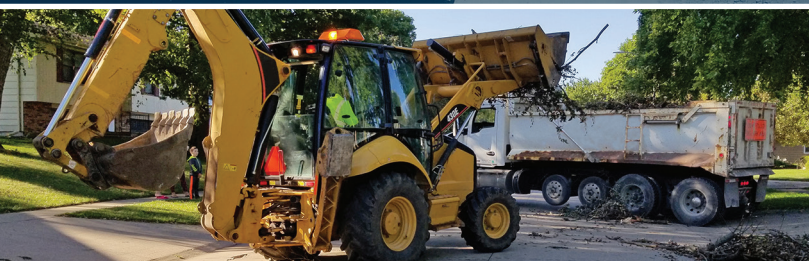
Providing valuable resources
for public works staff

Connect with colleagues

Learn new techniques

Improve work efficiencies

Infrastructure is the lifeblood of all Iowa cities, no matter their size. Public works staff everywhere are on the front lines facing the challenge of building and maintaining that infrastructure—they don't have the option of leaving a sewer line clogged, letting the water run from a broken water main, leaving the snow unplowed, or taking time off during an unprecedented storm. We can help with that challenge!



The Iowa Public Works Service Bureau (PWSB) provides resources for public works staff from cities of all sizes to connect with one another in order to improve work efficiency, learn new techniques, and maximize available resources. Our goal is “Communicate to Innovate!”

What do we provide?

- Invaluable tools and resources for public works departments that provide essential services
- Efficient use of public resources to maintain infrastructure, which is critical to long-term sustainability
- Specific data about what is working for other cities in Iowa to help you make informed decisions and develop policies
- In-depth understanding of the workings of public works departments, which leads to stable and sustainable communities
- Better communication among public works staff across cities in Iowa, which results in improved efficiency in operating and maintaining our infrastructure



Why join the PWSB?

- Connect with your fellow public works colleagues
- Raise questions and get responses from public works colleagues across the state who have experienced similar situations
- Evaluate how other cities within your population range compare to yours (i.e., How does your street maintenance cost per mile compare with cities of similar size?)
- Compare your city's public works policies with other comparably sized cities (i.e., snowplowing policies, sidewalk inspection policies)
- Post job opportunities directly with Iowa's public works groups

Whether your city is small or large, we encourage you to join the PWSB!



← **Scan the code**
[https://www.IowaPWSB.org/
member-registration/](https://www.IowaPWSB.org/member-registration/)

What is the PWSB?

The Iowa Highway Research Board has awarded a two-year grant to the Statewide Urban Design and Specifications (SUDAS) program at Iowa State University to establish the Iowa Public Works Service Bureau (PWSB).

The newly established PWSB is Phase 2 of the overall PWSB project. The goal of this phase is to demonstrate to the Iowa Legislature and municipal leadership across Iowa the value of providing our public works staff a platform by which they can “communicate to innovate.”

The Phase 1 of the project was a feasibility study to determine the interest in having a public works service bureau. During the feasibility study, a questionnaire was sent to all Iowa cities with populations of 250 people or more. The questionnaire asked if cities would use a system that provided contact information for the state's public works staff, asset management information, sample ordinances and policies, better communications with the Iowa DOT, and job descriptions and pay levels for public works staff. Over 80% of the respondents indicated they would use this system.

The PWSB is here to serve the public works community. With years of experience and a vast knowledge of public works needs, our staff can answer your questions and help you connect with your colleagues.

Visit [IowaPWSB.org](https://www.IowaPWSB.org) to learn more and to join the Iowa Public Works Service Bureau.