

① Insert shaping may be modified for insert widths less than 36 inches. For an 18 inch insert, reduce dimensions indicated by 1/4 inch.

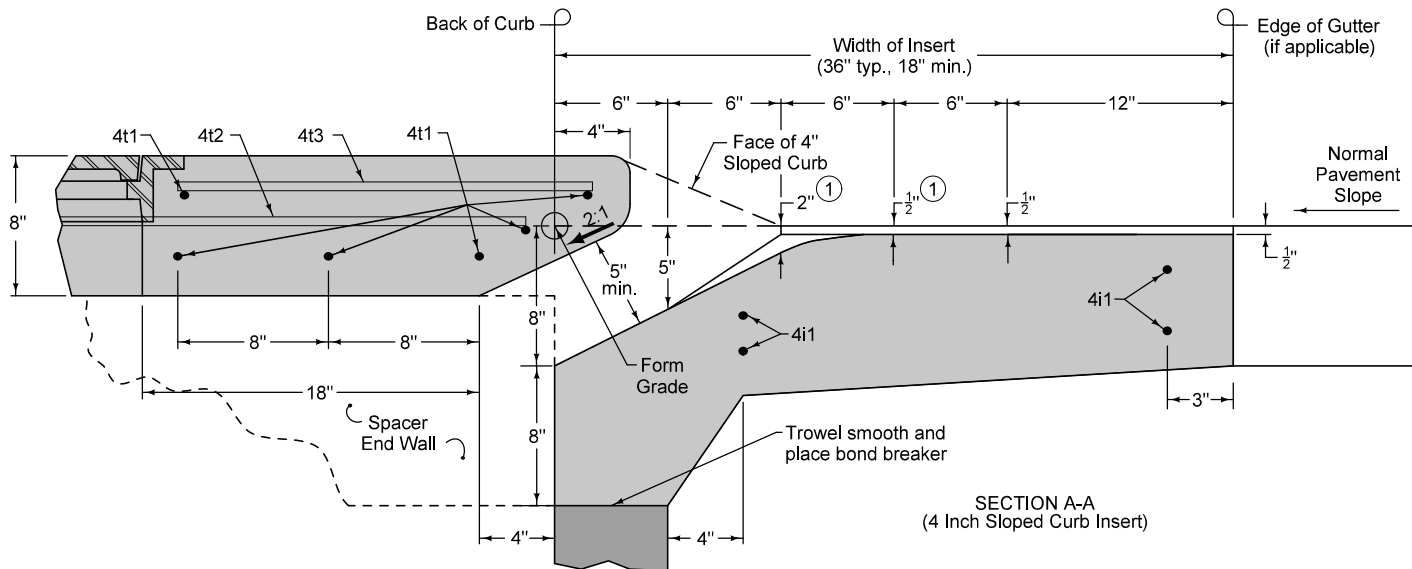
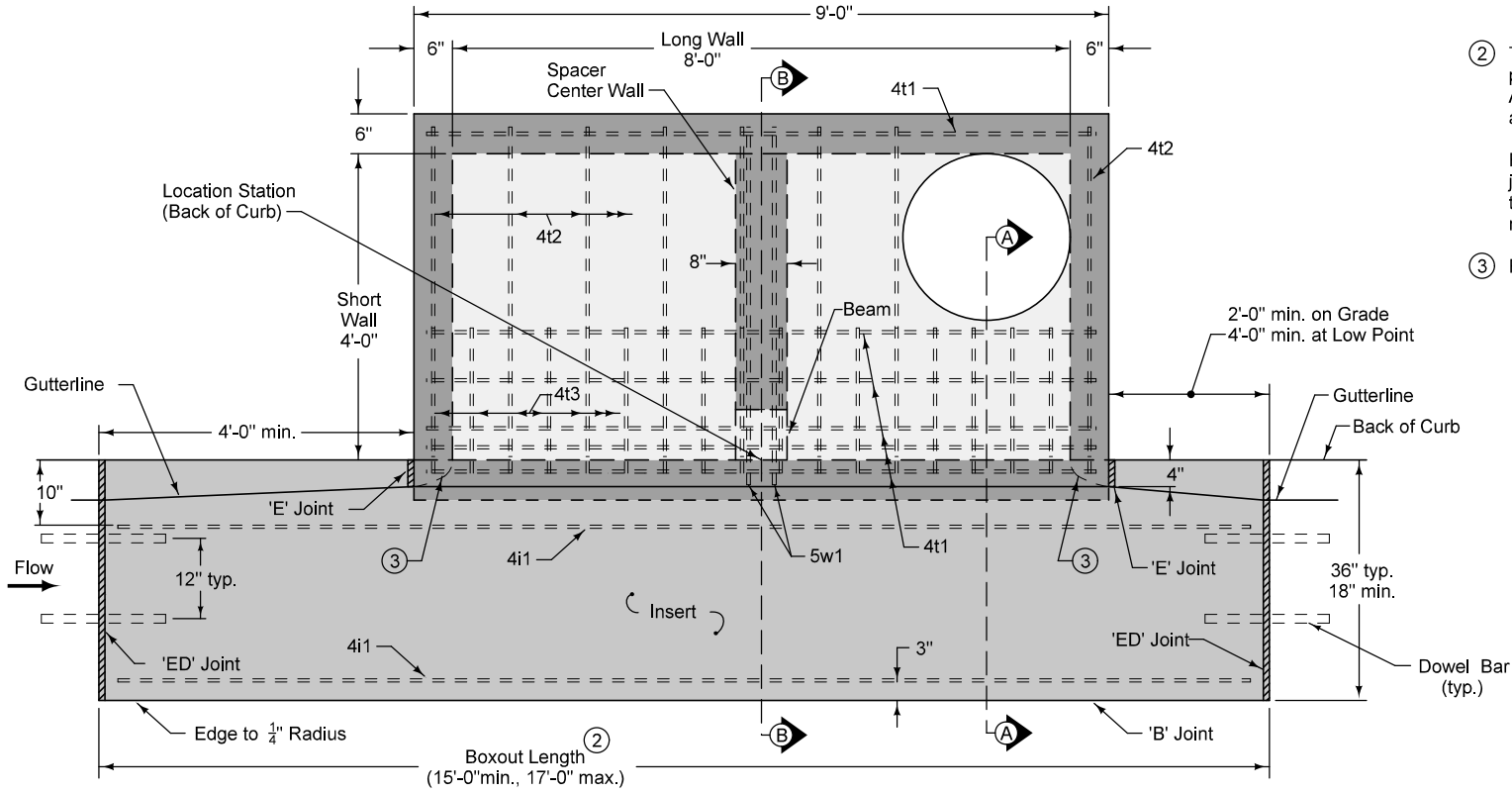


FIGURE 6010.510 SHEET 1 OF 3

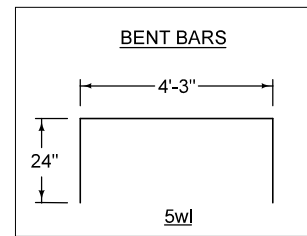
| | | | |
|--|-----------------|---|--------------|
| SUDAS IOWADOT | REVISION | 6 | 04-21-20 |
| | FIGURE 6010.510 | STANDARD ROAD PLAN | SW-510 |
| REVISIONS: Added Class 1 Bedding Material and changed maximum box out length to 17'. | | | SHEET 1 of 3 |
| Paul D. Wigand SUDAS DIRECTOR | | Steve Nadeau DESIGN METHODS ENGINEER | |
| DOUBLE OPEN-THROAT CURB INTAKE, LARGE BOX | | | |



PLAN

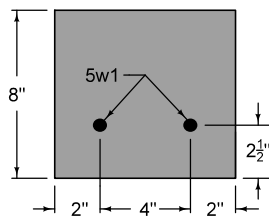
- ② Transverse joint spacing on new concrete pavement is controlled by the intake boxout. Adjust adjacent joint spacing as required to accommodate boxouts.
- For retrofit intakes, match existing pavement joints. Stop any transverse pavement joints that do not conform to the minimum spacing requirements at the edge of the insert area.
- ③ Rounded shaping at inlet.

| REINFORCING BAR LIST | | | | | | |
|----------------------|------|-------------|-------|--------|------------------------|------------|
| Mark | Size | Location | Shape | Count | Length | Spacing |
| 4b1 | 4 | Base | — | 9 | 4'-6" | 12" |
| 4b2 | 4 | Base | — | 6 | 8'-6" | 11" |
| 4i1 | 4 | Insert | — | 4 | Boxout Length minus 8" | See Insert |
| 4t1 | 4 | Top | — | 7 | 8'-6" | See Plan |
| 4t2 | 4 | Top | — | 8 | 4'-4" | 12" |
| 4t3 | 4 | Top | — | 18 | 1'-10" | 6" |
| 4w1 | 4 | Walls | — | 24 | Wall Height minus 4" | 13" |
| 4w2 | 4 | Long Walls | — | Varies | 4'-8" | 12" |
| 4w3 | 4 | Short Walls | — | Varies | 8'-8" | 12" |
| 5w1 | 5 | Beam | ⌊ | 2 | 8'-3" | 4" |

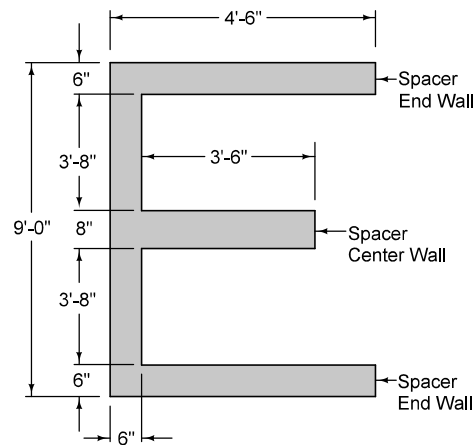


| | | |
|--|--------------------|--|
| SUDAS IOWADOT | REVISION | |
| | 6 | 04-21-20 |
| FIGURE 6010.510 | STANDARD ROAD PLAN | SW-510 |
| REVISIONS: Added Class I Bedding Material and changed maximum box out length to 17'. | | SHEET 2 of 3 |
| Paul D. Wiegand SUDAS DIRECTOR | | Stuart Miller DESIGN METHODS ENGINEER |
| DOUBLE OPEN-THROAT CURB INTAKE, LARGE BOX | | |

FIGURE 6010.510 SHEET 2 OF 3



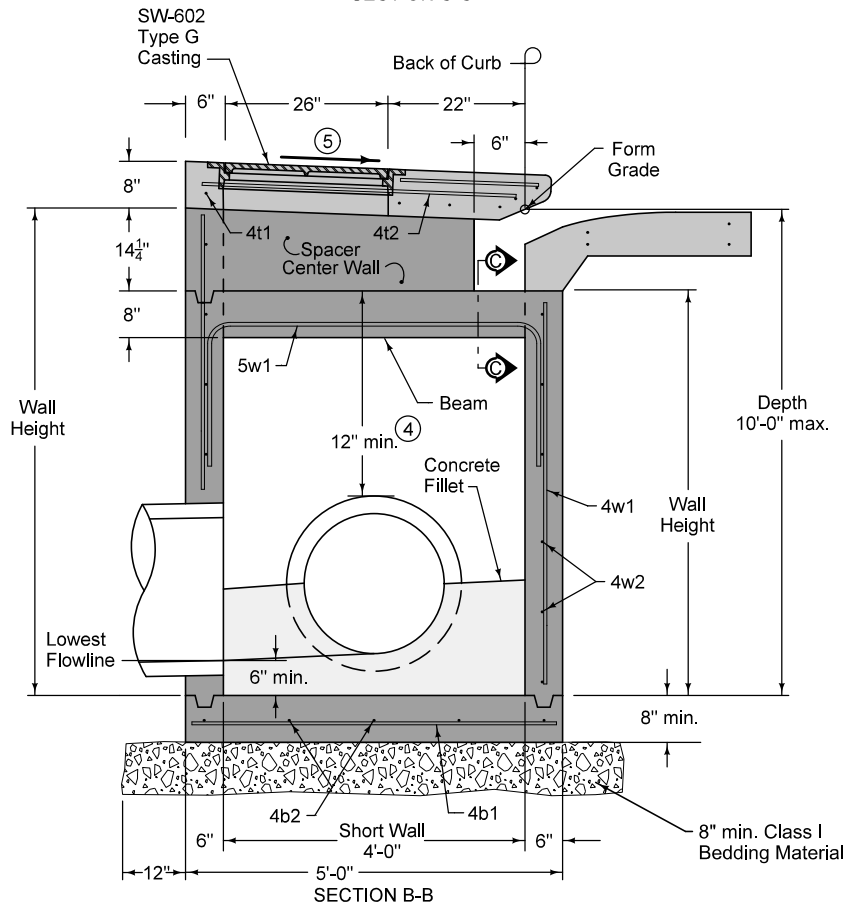
SECTION C-C



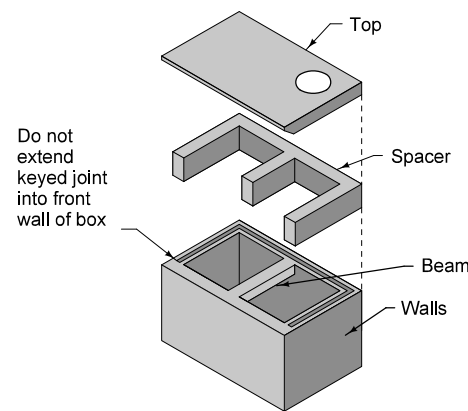
PLAN (SPACER)

- ④ 12 inch minimum wall height above all pipes.
- ⑤ Slope of 1.5% or as specified in the contract documents.

| MAXIMUM PIPE DIAMETERS | | |
|------------------------|-------------------|-------------------------|
| Pipe Location | Precast Structure | Cast-in-place Structure |
| Short Wall | 30" | 36" |
| Long Wall | 60" | 66" |



SECTION B-B



ISOMETRIC
(Refer to Section B-B for alignment of Top with Spacer)

| | | |
|--|--------------------|---|
| SUDAS | IOWADOT | REVISION |
| | | 6 04-21-20 |
| FIGURE 6010.510 | STANDARD ROAD PLAN | SW-510 |
| | | SHEET 3 of 3 |
| REVISIONS: Added Class I Bedding Material and changed maximum box out length to 17'. | | |
| <i>Paul D. Weigand</i> SUDAS DIRECTOR | | <i>Stuart Nade</i> DESIGN METHODS ENGINEER |
| DOUBLE OPEN-THROAT CURB INTAKE, LARGE BOX | | |

FIGURE 6010.510 SHEET 3 OF 3