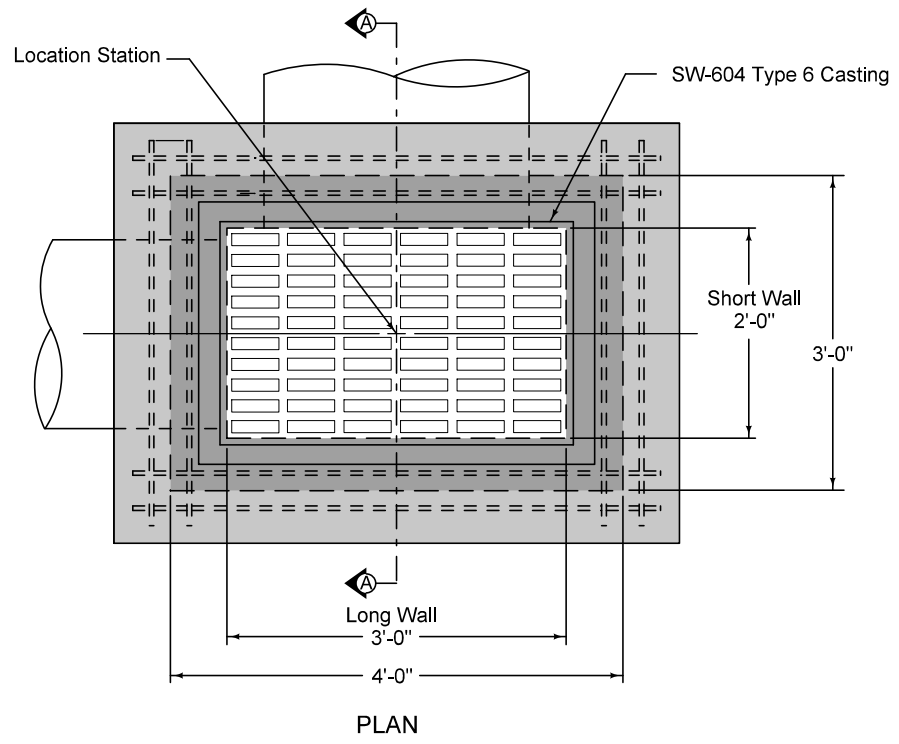


SECTION A-A

- ① Install four #4 diagonal bars at all pipe openings.
- ② Cast-in-place base shown. If base is precast integral with walls, the footprint of the base is not required to extend beyond the outer edge of the walls.
- ③ 12 inch minimum wall height above all pipes.



PLAN

MAXIMUM PIPE DIAMETERS		
Pipe Location	Precast Structure	Cast-in-place Structure
Short Wall	15"	18"
Long Wall	24"	30"

FIGURE 6010.511 SHEET 1 OF 1

SUDAS IOWADOT	REVISION	2	04-21-20
	FIGURE 6010.511	STANDARD ROAD PLAN	SW-511
REVISIONS: Added Class I Bedding Material.			SHEET 1 of 1
Paul D. Weigand <small>SUDAS DIRECTOR</small>		Stuart M. Nadeau <small>DESIGN METHODS ENGINEER</small>	
RECTANGULAR AREA INTAKE			