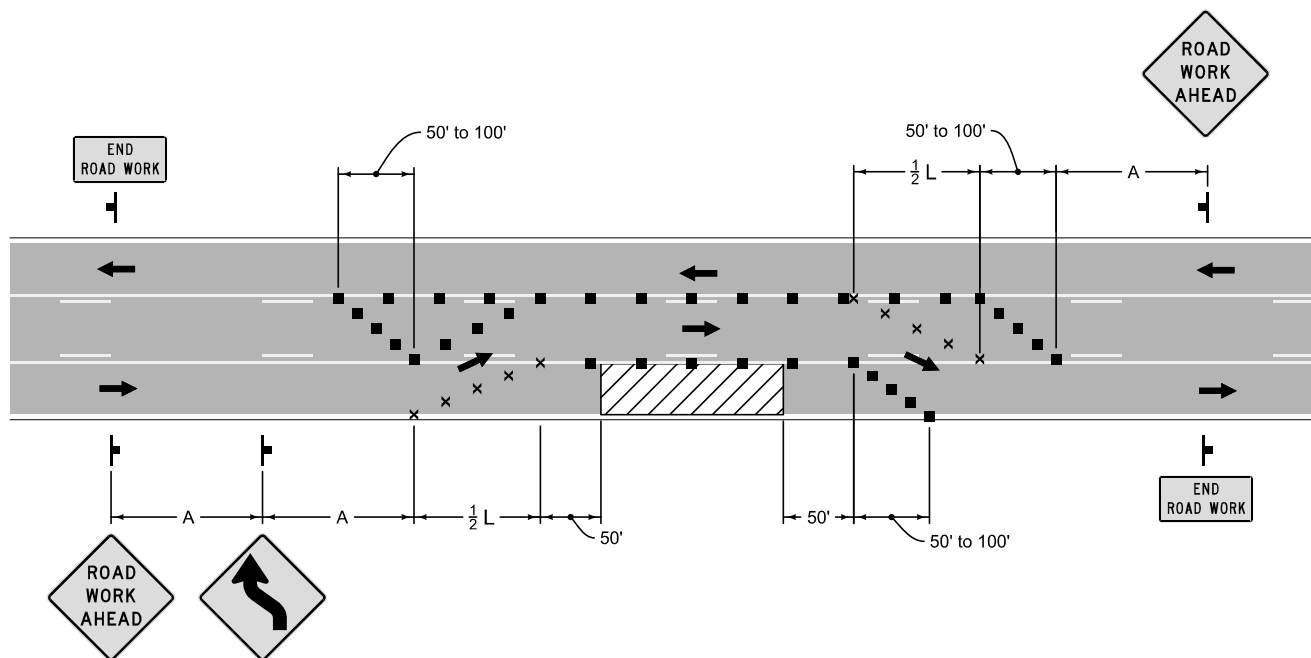


May be used for short-term daylight operations in urban areas on 3-lane street. Nighttime operations require additional traffic control and retroreflective sheeting.

Cones may be used as channelizing devices during daylight hours.

Flaggers and additional traffic control devices may be required for higher traffic volumes or commercial areas.

Refer to Figure 8030.101 for symbol key and sign spacing.



	REVISION
	New 10-17-17
	<b>8030.108</b>
SHEET 1 of 1	

SUDAS Standard Specifications

TRAFFIC CONTROL FOR OUTSIDE  
LANE CLOSURE OF STREET WITH  
CONTINUOUS LEFT TURN LANE