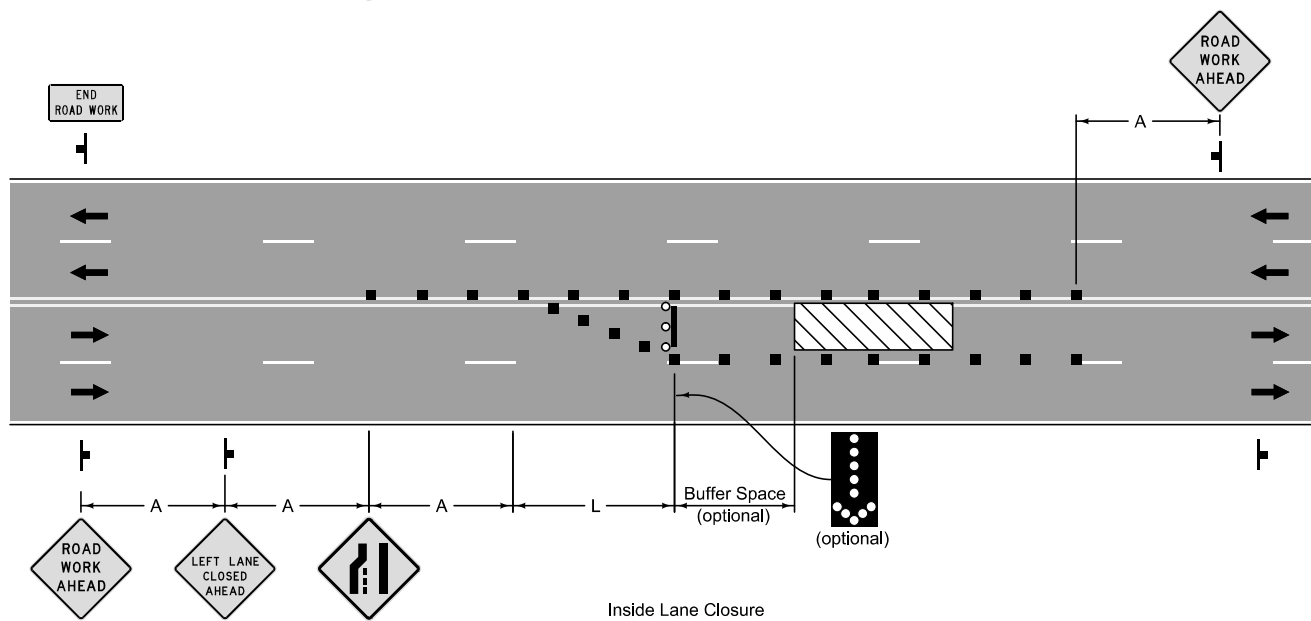



Outside Lane Closure



Inside Lane Closure

For low speed, low volume, urban streets the LEFT/RIGHT LANE CLOSED AHEAD sign may be omitted.

Refer to Figure 8030.101 for symbol key and sign spacing.

	REVISION New 10-17-17
	<b>SUDAS</b> <b>8030.110</b>
	SHEET 1 of 1
SUDAS Standard Specifications	
LANE CLOSURE ON MULTI-LANE STREET	