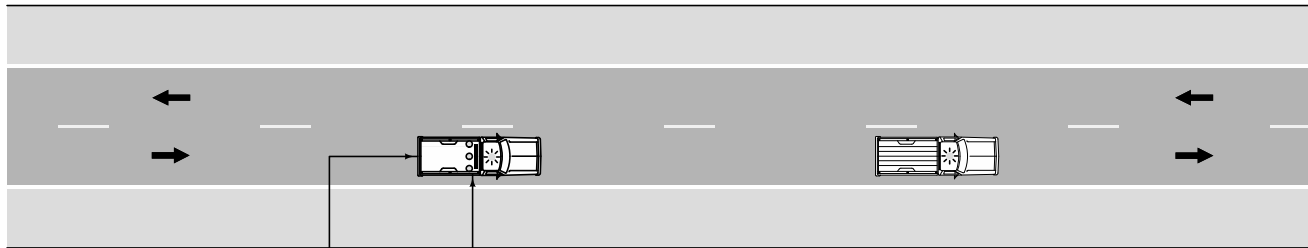


Use for pavement marking and surface maintenance operations in daylight hours only.

Place vehicle-mounted signs at an elevation so they are not obscured by equipment or materials and are fully visible to approaching traffic.

Cover or turn sign legends from view when work is not in progress.


Refer to Figure 8030.101 for symbol key and sign spacing.



If an arrow board is used, operate in the caution mode
(optional)

Use sign shape and legend appropriate to the type of work.
Examples include:



| | |
|---|-----------------|
|  | REVISION |
| | New 10-17-17 |
| SUDAS | 8030.115 |
| SHEET 1 of 1 | |
| SUDAS Standard Specifications | |
| MOVING OPERATIONS ON TWO LANE ROADS | |