
Overlays

A. General

Overlays can extend the life of an existing pavement if good selection, design, and construction practices are followed. They can be constructed rapidly and while the roadway is open to traffic if warranted.

In order to achieve successful performance, it is important to choose the correct type of overlay based on the conditions of the existing roadway. This process of evaluation is critical to the success of the pavement and long-term performance. Design practices include thickness design, selection of specific materials, and construction details. Good construction practices include pre-overlay repairs to prepare the existing pavement if required.

B. Concrete Overlays

There are two options for concrete overlays - bonded and unbonded. Bonded overlays are designed as part of the pavement thickness where unbonded overlays are essentially new pavement on a stable base (existing pavement). For complete and detailed guidance on the design and construction of concrete overlays, refer to the [Guide to Concrete Overlays](#) (hereinafter called *Concrete Overlays*). This guide includes the latest information on the evaluation of the existing pavement, guidance on the overlay selection and managing concrete overlay design and construction. Table 5J-1.01 summarizes the characteristics and applications of the different types of concrete overlay.

- 1. Bonded Overlays:** The purpose of a bonded concrete overlay is to add structural capacity and eliminate surface distresses on pavements that are in good to fair structural condition. The new concrete overlay is bonded to the existing pavement and acts as one monolithic unit that increases the structural capacity and provides a means of addressing surface deficiencies or overall ride quality issues. Typically, bonded concrete overlays are relatively thin - typically 2 to 6 inches thick.

Bonded concrete overlays are not good solutions when any of the following situations exist:

- Existing concrete pavement has widespread material related deficiencies issues such as ASR or D-cracking, subgrade support is inadequate or non-uniform, or drainage is poor.
- Existing asphalt or composite pavement exhibits significant structural deterioration, inadequate base or subgrade support or poor drainage condition.

When the situations discussed above exist, unbonded concrete overlays may be considered.

- 2. Unbonded Overlays:** The purpose of the unbonded concrete overlay is to restore the structural capacity of an existing pavement that is moderately to significantly deteriorated. On unbonded concrete overlays, bonding is not needed to reach the desired performance. Unbonded concrete overlays are considered a minor or major rehabilitation strategy depending on the condition of the existing pavement. When the unbonded concrete overlay is placed on an existing concrete pavement, a separation layer is required to prevent bonding and un-necessary stress between the two layers. The separation layer can be provided by either a thin asphalt layer or a nonwoven geotextile fabric. Typically, unbonded concrete overlays are 4 to 11 inches thick.

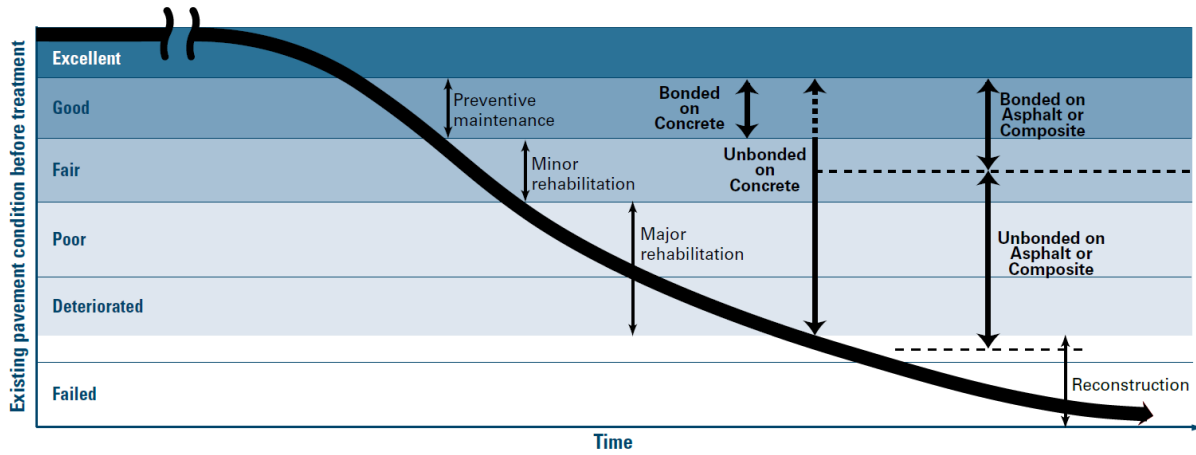
Table 5J-1.01: Concrete Overlay Characteristics and Applications

	Bonded Concrete Overlay	Unbonded Concrete Overlay
Purpose	Improve structural capacity & eliminate surface distresses	Restore structural capacity & eliminates surface distresses
Preservation Strategy	Preventative Maintenance	Minor or Major Rehabilitation
Typical Overlay Thickness	2" to 5" (on concrete) 2" to 6" (on asphalt)	4" to 11"
Condition of Existing Pavement	Good to fair structural condition or repaired to that condition	Moderately or significantly deteriorated, must be firm and stable
Special Design/ Construction Considerations	<ul style="list-style-type: none"> For bonded concrete overlays of concrete, the coefficient of thermal expansion of the aggregate in the concrete overlay must be similar those of the existing pavement Existing joints must be in fair to good condition, or repaired Critical to establish a good bond with existing pavement Shotblasting or sandblasting may be needed to prepare concrete surfaces For overlays over existing concrete, joints must match existing spacing and transverse joints sawed through the new overlay plus 0.5", longitudinal joints shall be at least T/2, new overlay joints must match existing concrete pavement joints The width of the new overlay joint must be equal to or wider than the joint in the existing concrete pavement Curing should be applied at 2 times the usual application rate. Apply PAMS per manufacturer's recommendation. Surface distress on existing asphalt pavements may be removed by milling 2" or more of surface distortions (min. 3" asphalt shall remain) For overlays over asphalt-surfaced pavements, smaller square panel sizes from 3' to 8' is recommended For bonded overlays on asphalt, water should be sprinkled on the surface when surface temperature is greater than 120 degrees Fahrenheit during overlay placement 	<ul style="list-style-type: none"> Full-depth repairs may be needed to restore structural integrity of poor deteriorated areas Surface distress on existing asphalt pavements may be removed by milling 2" or more of surface distortions Concrete patches in the existing asphalt pavement should be separated with a bond breaker For unbonded concrete overlays on asphalt, the underlying asphalt surface temperature should be maintained below 120 °F; this can be done by sprinkling the asphalt with water prior to the overlay, no standing water shall remain Shorter panel sizes may be needed to help address curling and warping stresses Unbonded concrete overlays on concrete require a separation layer of thin asphalt (typically 1") or a non-woven geotextile fabric to provide drainage, separation and minimize reflective cracking If there are material related distress in the existing concrete or existing composite section, repairs may be needed For unbonded concrete overlays 6" and thinner, curing should be applied at 2 times the usual application rate. Apply PAMS per manufacturer's recommendation.
Available Design Procedures	ACPA (2014a, 2014b), StreetPave12; AASHTO (1993, 2008, 2015), WinPAS 12; Vandenbossche (2014) BCOA	ACPA (2014b), StreetPave12; AASHTO (1993, 2008, 2015), WinPAS12

Source: Adapted from [Concrete Overlays](#)

- Evaluation:** The evaluation and characterization of the existing pavement is a critical step in determining the suitability of a concrete overlay for the prevailing design conditions. Figure 5J-1.01 shows a typical pavement condition curve with various preservation strategies and the applicability of bonded and unbonded concrete overlays. Table 5J-1.02 summarizes the steps involved in evaluating an existing pavement.

Figure 5J-1.01: Timing of Application of Bonded and Unbonded Concrete Overlays



Source: [Concrete Overlays](#)

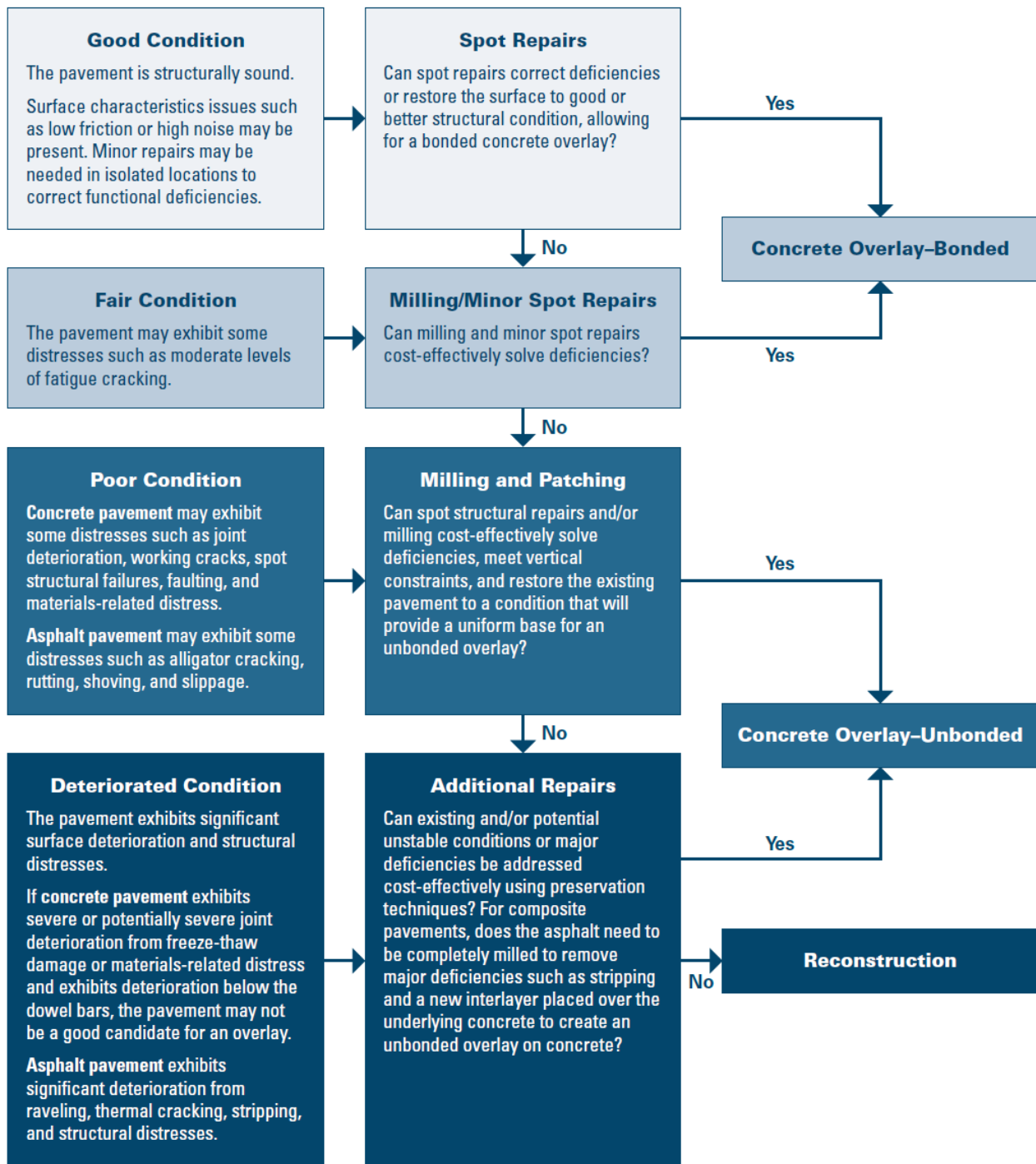
Table 5J-1.02: Pavement Evaluation Process

Process	Details
Step 1: Review pavement history and performance goals.	<ul style="list-style-type: none"> • Pavement design, layer types and thicknesses, length, width, age, drainage system. • Existing traffic and performance level (classification) • Design life and remaining life. • Design traffic and performance requirements. • Existing elevation and grade restrictions. • Other historical information.
Step 2: Perform visual examination of pavement.	<ul style="list-style-type: none"> • Note visible surface and structural distresses and determine overall condition of pavement (good, fair, poor, deteriorated). PCI may be determined and compared to condition curve.
Step 3: Conduct a thorough examination of pavement structure through core analysis.	<ul style="list-style-type: none"> • Identify type, extent, and severity of pavement distress. • Verify pavement layer types and thicknesses.
Step 4: Optional Analysis <ul style="list-style-type: none"> • Material-related tests (4a) • Subsurface test (4b) • Surface texture tests (4c) 	<ul style="list-style-type: none"> • Material-related tests: <ul style="list-style-type: none"> ○ Petrographic analysis to identify material-related distress issues and determine quality of air-void system in existing concrete. ○ Determine if asphalt stripping issues exists. ○ Determine aggregate coefficient of thermal expansion for existing concrete. • Tests of existing pavement: <ul style="list-style-type: none"> ○ Falling weight deflectometer testing to determine: <ul style="list-style-type: none"> ▪ Subgrade/subbase support (k-value) or stiffness. ▪ Subgrade/subbase variability. ▪ Load transfer efficiency of concrete pavements. ▪ Presence of voids. ▪ Concrete flexural strength. ○ Subgrade tests to determine: <ul style="list-style-type: none"> ▪ Frost heave characteristics. ▪ Shrink-swell characteristics. ▪ Soil strength (dynamic cone penetration or standard penetration test). ○ Surface texture tests: conduct if before/after comparisons of pavement surface friction are needed.

Source: [Concrete Overlays](#)

After the evaluation, it is necessary to select the type of concrete overlay. Figure 5J-1.02 illustrates the basic steps involved. The process begins by entering the flowchart on the left, based on the condition of the existing pavement, and then following through the chart.

Figure 5J-1.02: Selecting Appropriate Concrete Overlay Solution



Source: [Concrete Overlays](#)

- Construction Materials:** Conventional concrete materials are utilized in concrete overlay construction including cement, supplementary cementitious materials (SCMs), aggregate, water and chemical admixtures. Other conventional materials including steel tie bars, dowel bars, curing compound, and joint sealant are used. The key considerations related to concrete overlay materials and mixtures are summarized in the [Concrete Overlays](#).

- a. Fibers:** Although the use of structural fibers are not normally necessary for most concrete overlays, their use may be warranted in certain situations including those where the overlay thickness is limited, heavier weight traffic loads are expected and increased joint spacing is desirable. Structural fibers improve residual strength of the overlay. Structural fibers can perform the following functions in a concrete mix:
- 1) Help increase concrete toughness
 - 2) Help control differential slab movement caused by curling and warping, heavy loads, temperatures, etc. (allowing for longer joint spacing)
 - 3) Increase concrete's resistance to plastic shrinkage cracking (enhancing aesthetics and concrete performance)
 - 4) Hold cracks tightly together (enhancing aesthetics and concrete performance)

Additional details on the characteristics and application of fibers in concrete overlays are provided in the [Fiber-Reinforced Concrete for Pavement Overlays: Technical Overview](#).

- b. Separation Layer Materials:** Separation layers for unbonded concrete overlays on concrete may serve three purposes.
- Provide isolation from movement of the underlying pavement. The separation layer is a shear plane that relieves stress, mitigates reflective cracking, and may prevent bonding with the existing pavement
 - Provide drainage separation either by use of an impervious material or channel water along the cross slope to the pavement edge
 - Provide a cushion or bedding layer to reduce bearing stress and to prevent keying from the underlying pavement

The separation layer may be either a hot mix asphalt or a non-woven geotextile fabric.

- 1) Asphalt Separation Layer:** Conventional HMA mixtures have been used for several years to provide separation for unbonded concrete overlays. Typically, a 1 inch thick layer is used to provide separation from irregularities in the existing pavement, although thicker layers may be used when the irregularities are large enough to impact placement operations.

Poorly drained unbonded concrete overlays under heavy traffic may result in scouring or stripping of the asphalt interlayer. In an effort to reduce scour pore pressure and decreased stability, some agencies increase the porosity of asphalt mixtures. The sand content is reduced and the volume of 0.38 inch chip aggregate is increased. This modified (porous) mixture has a lower unit weight and lower asphalt content, and is comparable in cost to typical surface course mixtures.

- 2) Nonwoven Geotextile Separation Layer:** Nonwoven geotextile interlayers are an alternative to an asphalt interlayer in providing separation, drainage and cushion for an unbonded concrete overlay. The structural condition of the existing concrete pavement must be carefully assessed before geotextile layers are used in lieu of an asphalt interlayer. Leykauf and Birmann (2006) also note that geotextile interlayers are especially recommended for concrete overlays on old concrete pavements.

The fabric is secured to the existing pavement with pneumatic hammers at approximately 6 feet spacing or through the use of adhesives. It is critical that the fabric is free of wrinkles and no more than three edges overlap at one location. The weight of the fabric is dependent on the thickness of the overlay. Recommended weights for nonwoven geotextile fabrics for unbonded concrete overlays are as follows:

Overlays \leq 4 inches – 13.3 oz/yd²

Overlays \geq 5 inches – 14.7 oz/yd²

Temperature of the surface upon which the overlay is to be placed is critical to minimize fast drying out and shrinkage cracks in the PCC overlay. One method to assist in keeping the surface cooler is to specify a fabric interlayer that is white or light colored for the hot, summer months. A black or dark fabric interlayer can be used in the cooler spring and fall months.

Specifications for the nonwoven geotextile separation layer are included in [SUDAS Specifications Section 7011](#).

5. **Thickness Design:** There are several design procedures available for determining the thickness of concrete overlays. Designers should reference [Concrete Overlays](#) for recent guidance. This document provides guidance on the following design procedures, in addition to more recent software design. The following design methodologies are most common:
 - [Bonded Concrete Overlays on Asphalt Pavements Mechanical-Empirical Design Guide](#)
 - [AASHTO Guide for Design of Pavement Structures](#)
 - [StreetPave](#)
 - Unbonded Concrete Overlays on Concrete ([UBOL Design](#))
6. **Construction:** Concrete overlays are constructed using conventional concrete paving equipment and procedures. Construction time for concrete overlays is significantly shorter than reconstruction due to the lack of earthwork required as well as the potential for the paving equipment to move faster due to the thinner layer. Payment for concrete overlays are typically based on square yards of concrete placement and cubic yards of concrete delivered to the site. [Concrete Overlays](#) provides a detailed discussion of construction consideration items and how they relate to bonded and unbonded concrete overlays.

Joints are one of the most critical elements for overlay construction. Timing of joint sawing is critical and because of the smaller joint spacing, the sawing operation is likely to determine daily production limits. Joint spacing requires special consideration based on the type of overlay and the type of underlying pavement.

For bonded overlays over concrete pavement, the joints in the overlay need to match the joints in the underlying pavement. The joints should be cut full depth plus 1/2 inch for transverse joints and T/2 for longitudinal joints. The width of the transverse saw cut must be equal to or greater than the width of the crack at the bottom of the transverse joint in the existing pavement.

The recommended joint pattern for bonded overlays over asphalt pavement should not exceed 1 1/2 times the overlay thickness. Transverse joints should be sawed to T/3 using conventional saws and not less than 1 1/4 inches using an early entry saw. Longitudinal joints should be cut to T/3.

For unbonded overlays, it is generally a good practice to mismatch joints or cracks to maximize load transfer from the underlying pavement. Slab dimensions (in feet) should not exceed 1 1/2 times the overlay thickness for overlays less than 6 inches thick, and should not exceed 2 times the thickness with an absolute maximum of 15 feet for overlays greater than 6 inches thick. Transverse saw cuts for conventional saws and longitudinal joints should be T/3. Transverse cuts for early entry saws should be at least 1 1/4 inches deep.

C. Asphalt Overlays

1. HMA Overlays:

- a. **Conventional:** Conventional HMA overlays are typically 2 to 4 inches thick, placed in multiple lifts. Lift thickness varies but are typically 1 1/2 inches to 3 inches thick. The overlay is expected to improve rideability, surface friction, profile, crown, and cross slope. In addition, specific distress types of low severity cracking, raveling, roughness, low severity bleeding, and low severity block cracking are improved. HMA overlays rely on timely compaction to be successful. Typically, HMA overlays are dense-graded but may also be open-graded if a porous mix is desired.

In order for the aggregate in the HMA overlay to properly align itself during compaction and achieve required density, the nominal maximum aggregate size must be no larger than 1/3 the thickness of the overlay. For example, for a 1 1/2 inch thick asphalt lift, nominal aggregate size should be no larger than 1/2 inch. See [SUDAS Specifications Section 7020](#).

- b. **Thin Lift:** Sometimes called thinlays, thin lift overlays generally range from 3/4 inch to 1 1/2 inches thick. With the thin lift overlays, the nominal maximum aggregate size must be no larger than 1/3 the thickness of the overlay. The mix has more asphalt binder (approximately 8%) than a traditional mix in order to cover the surface area. The binder (PG 64-34E+) is formulated to be softer, which helps the mix be more durable and resistant to cracking than traditional mixes.

Because of its nature and the overlay being very thin, it is critical to have a sound underlying pavement for the thin lift overlay to perform properly. In addition to the condition of the underlying pavement, one of the biggest factors for success is cleanliness, especially if milling is involved.

In most cases, milling of the underlying pavement will help improve smoothness as well as remove defects that could reflect through the new thin lift overlay. Milling will roughen the surface, which should improve the bonding and thus the shear resistance. With or without milling, cleaning of the roadway is imperative. Any amount of dust will affect the tack coat. Due to the thin nature, tack failure will lead to debonding and slippage.

The smaller aggregate size used in thin lift overlays can present production and transport challenges. If the air temperatures are cooler and the transport distance long, the mix may lose heat quicker than standard mixes and thus workability and compaction can be compromised. Production temperatures may need to be greater for thin lift overlays because they cool more quickly. Production time for thin lift overlay mixes is generally slower than for standard mixes. Fine aggregates generally retain more moisture than coarse aggregates and thus require more drying time. In addition, the fine aggregates require more asphalt to fully coat the greater surface area they exhibit.

A uniformly applied tack coat is essential to the success of thin lift overlays. Raveling and slipping of the surface course at the interface with the existing pavement are problems when tack coats are insufficient or applied in streaks.

With the thin lift thickness, it is difficult to isolate the density of the overlay from the density of the underlying pavement. Thus, in most cases, a rolling pattern is established. To date, experience has shown that three passes with a vibratory steel-wheeled roller provides appropriate density.

As noted, the performance of thin lift overlays will depend on traffic, climate, underlying pavement quality, surface preparation, materials, and construction quality. In colder climates such as in Iowa, special attention needs to be paid to thermal cracking and damage created by snowplows.

- c. **Interlayers:** HMA interlayers can be placed prior to the HMA overlay to minimize reflective cracking from the underlying pavement. An asphalt interlayer is a specially designed lift of HMA placed over a pavement and under an asphalt overlay. The asphalt interlayer is usually about 1 inch thick and uses a highly polymerized asphalt binder (PG 58-34E), fine aggregates, and a higher than normal asphalt cement content to develop a flexible layer. The interlayer will have the elasticity to resist and partially absorb the tension, shear, and bending exerted on the pavement. The asphalt interlayer assists in retarding reflective cracking of the HMA overlay caused by movement of the underlying pavement. The asphalt interlayer also helps keep additional moisture from penetrating through any cracks that are reflected and thus delaying any further deterioration of the pavement structure.

The condition of the underlying pavement is critical. If an underlying pavement has deteriorated or become unstable, it may be necessary to do removal and patching or placement of a leveling course with standard HMA prior to placement of the interlayer. Due to the higher cost, the asphalt interlayer should not be used as a leveling course.

2. **Crack and Seat with Asphalt Overlay:** Cracking and seating with asphalt overlay is considered a major rehabilitation. Crack and seat will typically reduce the occurrence and severity of reflection cracks in the asphalt surface overlay. The crack and seat process is best used on structurally good PCC pavements with limited panel movement. Installing a subdrain well in advance, up to a year prior, of the crack and seating operation will enhance the quality of the crack and seat operation because the more stable subgrade/subbase will assist in efficient pavement cracking. The subdrain will also provide improved subgrade support for the new pavement structure. The existing concrete is broken with a segmental type breaker to produce hairline cracks at approximately 1 1/2 to 3 foot spacing. The cracked slabs are then seated by use of a weighted roller to reestablish support between the underlying subbase or subgrade and the existing pavement. The roller is usually a rubber-tired piece of equipment with a minimum gross load of 30 tons. Some streets may not have adequate strength to support a heavy roller. The engineer may designate the use of a lighter roller.



Crack and Seat - Photo courtesy of Antigo Construction

In urban areas, a full depth saw cut along the curblines and also around manholes and utility fixtures, such as water valves, is required prior to conducting crack and seat operations. In addition, a guillotine style breaker should be used with caution where structures are near the roadway. Impacts from the large single breaker can vibrate structures and cause concerns for property and utility owners. A segmental breaker results in lower magnitude vibrations and is recommended for crack and seat projects in urban areas. Informing the public about the project and especially the project schedule will help avoid potential problems. Assuring complete transverse cracking is critical with a segmental breaker. The breaking pattern with the segmental breaker must be varied to avoid developing continuous longitudinal cracks. Crack and seat activities typically produce earth-borne vibrations that are below the level necessary to cause damage, unless the source of the vibrations is very close (< 25 feet). Therefore, these lower intensity vibrations can be considered annoying and may cause people to believe that the building is being damaged, when in reality it is not being damaged. However, there are certain conditions such as close proximity to historical buildings or buildings that house historical or antique

artifacts that may require special attention to avoid damaging the structure or the artifacts in the structure. The following steps should be taken as the project design is progressing:

- a. Identify potential problem areas along the project including evaluating the potential for damage to underground utilities.
- b. Determine what conditions exist and check for existing damage. Deteriorated sewer systems and aging water mains could be damaged by the vibrations.
- c. If allowed by the property owners, take photos of existing conditions prior to construction commencing to establish a baseline.
- d. If necessary, provide for monitoring and recording vibrations during the project construction.
- e. Be ready to investigate concerns and respond to them.

3. **Modified Rubblization with Asphalt Overlay:** Modified rubblization blends the principles of crack and seat and full rubblization by cracking the roadway to approximately 12 inch to 18 inch pieces. Installation of a longitudinal subdrain prior to initiating the modified rubblization process is strongly recommended. Subdrains will enhance the success of the project because the more stable subgrade/subbase will assist in efficient pavement breaking and provide improved subgrade support for the new pavement structure. This process can be used when softer subgrades prevent use of full rubblization. Seating is accomplished with either a 35 ton rubber tired roller or a 10 ton vibratory roller. A 2 inch to 3 inch rock interlayer of 3/4 inch roadstone may be placed on the rubblized concrete and rolled prior to placing the asphalt overlay if surface variations remain after initially rolling. The use of the interlayer provides a more stable work platform and enhances the overlay's ability to stop reflective cracking.

Like rubblization, modified rubblization is not recommended for use in urban areas due to the potential for damage to underground utilities, adjacent properties, and structures.

4. **Rubblizing with Asphalt Overlay:** Rubblizing of an existing concrete pavement and placement of an asphalt overlay is an optional major rehabilitation method. This process includes breaking up the concrete pavement into small pieces and rolling it into place to produce a sound base, which prevents reflective cracking in the asphalt surface. Rubblizing a concrete pavement successfully is predicated on having a stable subgrade so the concrete material does not intermix with the subgrade. Installation of a longitudinal subdrain prior to initiating the rubblization process is recommended and will enhance the success of the project because the drier, more stable subgrade/subbase will assist in efficient pavement cracking. Rubblization has limited uses in areas of soft subgrades, which are often encountered in Iowa. If soft subgrades are encountered during a project, complete failure of the rubblization can result. In urban areas, care must be taken not to damage utilities with minimal cover, as well as the associate utility structures. Rubblization is generally not advised for urban roads. The final surface is an asphalt overlay.



Rubblizing - Photo courtesy of Antigo Construction

It may be necessary to work with the rubblizing contractor to establish a 100 to 200 foot test section as a means of determining the effectiveness of the rubblization. The goal is to break the existing PCC pavement into pieces with a nominal maximum size of 6 inches. In certain circumstances, the designer may allow larger pieces but they should not exceed 12 inches in size and should only be allowed for a limited area. It may be appropriate to require the contractor to excavate a test pit (4 feet by 4 feet) to assure that the PCC has been fractured throughout its entire thickness and that the bond between any steel and the concrete has been broken.

The displacement of the rubbilized pieces into the subgrade should be minimized. A steel drum vibratory roller having a minimum gross weight of 10 tons is required to compact the rubbilized pavement.

In areas of soft subgrade, it may be necessary to remove the pavement and patch with 2 inch limestone chokestone. Geogrid may be used under the patch rock to add additional support.

A 2 inch to 3 inch rock interlayer of 3/4 inch roadstone may be placed on the rubbilized concrete and rolled prior to placing the asphalt overlay if surface variations remain after rolling. The use of the interlayer provides a more stable work platform and enhances the overlay's ability to stop reflective cracking.

D. References

Adams, T. and J. Vandebossche. 2013. [*Bonded Concrete Overlay of Asphalt Pavements Mechanistic-Empirical Design Guide \(BOCA-ME\): Assessing the Need for Preoverlay Repairs When Construction BCOA*](#). University of Pittsburg, Pittsburg, PA.

American Association of State Highway and Transportation Officials (AASHTO). 1993. [*Guide for Design of Pavement Structures*](#). American Association of State Highway and Transportation Officials, Washington, DC.

American Association of State Highway and Transportation Officials (AASHTO). 2008. *Mechanistic-Empirical Design Guide - A Manual of Practice*. American Association of State Highway and Transportation Officials, Washington, DC.

American Association of State Highway and Transportation Officials (AASHTO). 2015. *Mechanistic-Empirical Design Guide - A Manual of Practice. Second Edition*. American Association of State Highway and Transportation Officials, Washington, DC

American Concrete Pavement Association (ACPA). 2014a. [*Bonded Concrete on Asphalt \(BCOA\) Calculator*](#). American Concrete Pavement Association, Rosemont, IL.

American Concrete Pavement Association (ACPA). 2014b. [*StreetPave 12: Structural Design Software for Street and Road Concrete Pavements*](#). American Concrete Pavement Association, Rosemont, IL.

Cackler, T., T. Burnham, and D. Harrington. 2018. [*Performance Assessment of Nonwoven Geotextile Materials Used as the Separation Layer for Unbonded Concrete Overlays of Existing Concrete Pavements in the US*](#). National Concrete Pavement Technology Center, Ames, IA.

Khazanovich, L. and D. Tompkins. 2017. [*Thin Concrete Overlays*](#). FHWA-HIF-17-012. Federal Highway Administration, Washington, DC.

Kosmatka, S. H. and M. L. Wilson. 2016. *Design and Control of Concrete Mixtures, 16th Edition*. PCA Bulletin EB001.15. Portland Cement Association, Skokie, IL.

Ley, M. T., R. Felice, and J. M. Freeman. 2012. [*Assessment of Air Void System Requirements for Durable Concrete*](#). National Concrete Pavement Technology Center, Ames, IA.

Leykauf, G., and D. Birmann. 2006. "Concrete Pavements with Geotextile Interlayer in Germany: Measurements and Long-term Behavior." *Proceedings, 10th International Symposium on Concrete Roads*. European Cement Organization (CEMBUREAU), World Road Association (PIARC), Brussels, Belgium.

Peterson, K. and L. Sutter. 2011. *Impact of Hydrated Cement Paste Quality and Entrained Air-Void System on the Durability of Concrete: Final Report*. Report No. RC-1552. Michigan Department of Transportation, Lansing, MI.

Roesler, J. et. al. 2019. [Fiber-Reinforced Concrete for Pavement Overlays: Technical Overview](#). National Concrete Pavement Technology Center, Ames, IA.

Smith, K. D., H. T. Yu, and D. Peshkin. 2002. *Portland Cement Concrete Overlays: State of the Technology Synthesis*. FHWA-IF-02-045. Federal Highway Administration, Washington, DC.

Smith, K., D. Harrington, L. Pierce, P. Ram, and K. Smith. 2014. [Concrete Pavement Preservation Guide](#). Second Edition. National Concrete Pavement Technology Center, Ames, IA.

Taylor, P., et. al. 2021. [Guide to Concrete Overlays](#). Fourth Edition. National Concrete Pavement Technology Center, Ames, IA.

The Transtec Group. 2013. [Nonwoven Geotextile Interlayers in Concrete Pavements](#).

Torres, H. N., J. R. Roesler, R. O. Rasmussen, and D. Harrington. 2012. [Guide to the Design of Concrete Overlays Using Existing Methodologies](#). Project DTFH61-06-H-00011. Federal Highway Administration, Washington, DC.

Van Dam, T. 2016. *Ensuring Durability of Concrete Paving Mixtures Part I: Mechanisms and Mitigation*. FHWA-HIF-16-012. Federal Highway Administration, Washington, DC.

Van Dam, T. J., J. T. Harvey, S. T. Muench, K. D. Smith, M. B. Snyder, I. L. Al-Qadi, H. Ozer, J. Meijer, P. V. Ram, J. R. Roesler, and A. Kendall. 2015. *Towards Sustainable Pavement Systems: A Reference Document*. FHWA-HIF-15-002. Federal Highway Administration, Washington, DC.

Vandenbossche, J. M. 2014. [Bonded Concrete Overlays of Asphalt Mechanistic-Empirical Design Procedure - BCOA-ME](#). University of Pittsburgh, Pittsburgh, PA.